

Specifications:

Current Draw: 50 mA during transmit
 Power: 8 – 24 VDC input
 Interconnect cable: 2 – 4 pair 24 AWG CAT3
 Power Cable: 18 AWG recommended
 installation dependant
 HM-W541ROS 3 minute check-in
 HM-W541ROL 60 minute check-in

Installation Notes:

Apply power to HM-W541ROx
 Log on to the Sentry computer using an administrator username.
 Choose “Transmitters “ option then select “New” then “Enroll”.
 On the backside of the HM-W541 press the reset switch (SW2) for one second.
 Serial number and type will be automatically filled in.
 Edit Announcement if required and press “Save”.
 Press “Room” and select location from list and press “Apply” and then “Save”.
 Press “Resident” and select name and “Apply” and “Save”.
Refer to Sentry Freedom manual for full programming instructions.

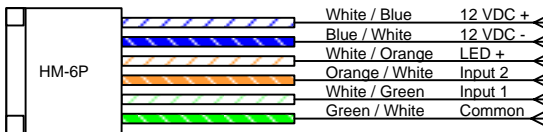
Note: When re-applying power to unit, press reset button.

Optional Devices:

Using the supplied HM-6P connector provides hook-up for additional wired remote call stations to input one (IN1) and a secondary input device (input 2) using a normally open contact closure.

Example:

Input 1 - Remote pull cord station(s)
 Input 2 - Contacts from smoke detector(s)



LED Operation:

HM-W541ROx

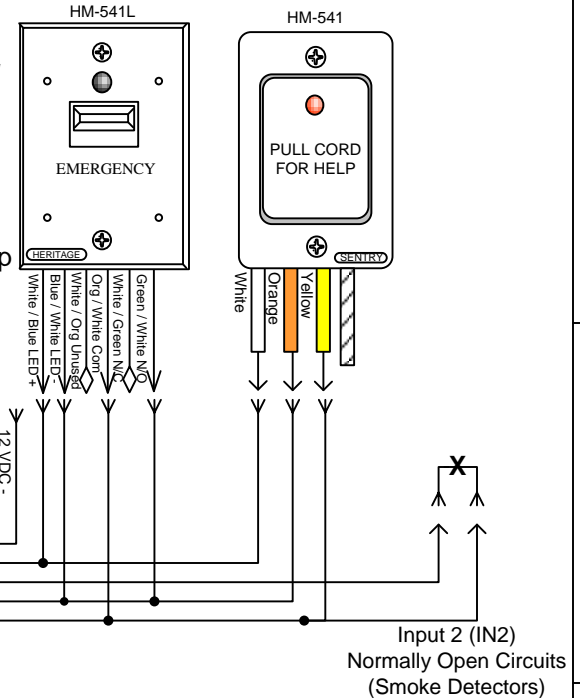
Active: 3 groups of 7 flashes each
 Off: 1 group of 9 flashes each
 Reset: 1 group of 10 flashes each
 Check-in: 1 group of 3 flashes each

HM-541

Steady on only when cord is pulled.

HM-541L

Steady on when switch is latched.



202 East Virginia Ave
 Tampa, Florida 33603

813-221-1000 (ph)
 813-223-1405 (fax)

www.heritagemedcall.com

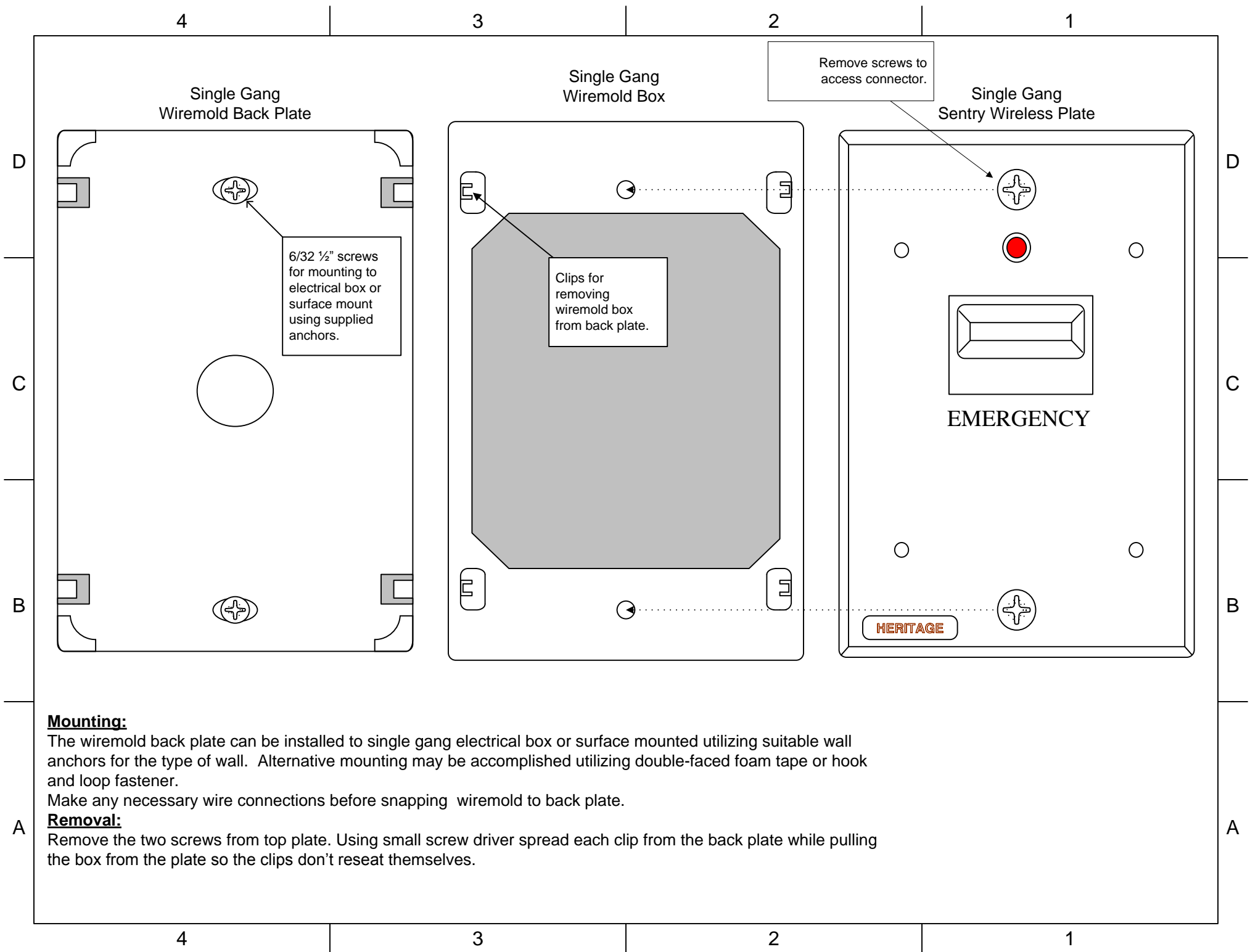
Sentry Freedom Wireless Emergency Call Systems

HM-W541ROS HM-W541ROL

Wireless Pull Cord Transmitter

Remote Powered – Normally Open Circuits

SIZE	Drawn by: JRP	File Name: hm-w541E-Insert.vsd	REV
SCALE	NA	Date: 09-30-08	SHEET 1 OF 2



Mounting:

The wiremold back plate can be installed to single gang electrical box or surface mounted utilizing suitable wall anchors for the type of wall. Alternative mounting may be accomplished utilizing double-faced foam tape or hook and loop fastener.

Make any necessary wire connections before snapping wiremold to back plate.

Removal:

Remove the two screws from top plate. Using small screw driver spread each clip from the back plate while pulling the box from the plate so the clips don't reset themselves.