

Installation Notes:
 Apply power to HM-W541RFx
 Log on to the Sentry computer using an administrator username.
 Choose "Transmitters" option then select "New" then "Enroll".
 On the backside of the HM-W541RFx press the reset switch (S1) for one second.
 Serial number and type will be automatically filled in.
 Edit Announcement if required and press "Save".
 Press "Room" and select location from list and press "Apply" and then "Save".
 Press "Resident" and select name and "Apply" and "Save".
Refer to Sentry Freedom manual for full programming instructions.

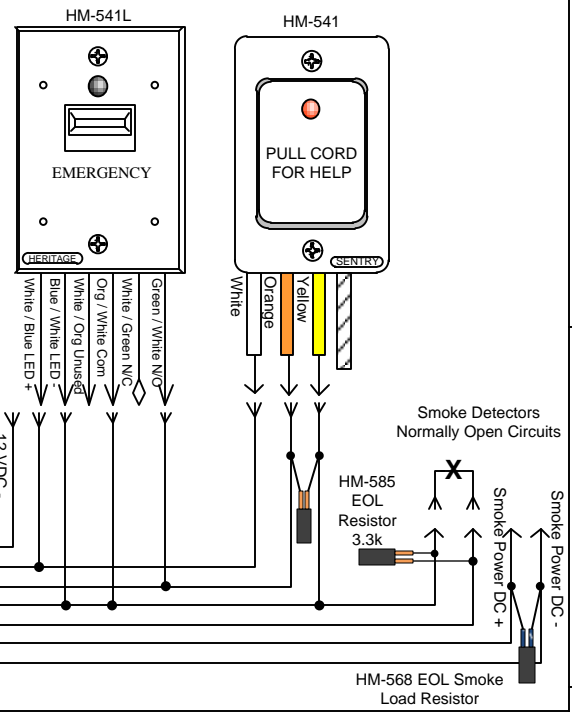
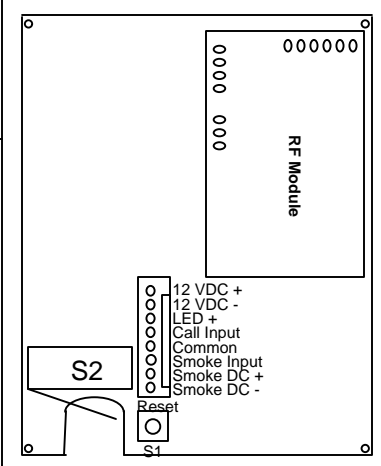
Operation:
 Pull Cord: A call placed using the pull cord on the HM-W541RFx or remote stations requires a single press of the reset switch after the switch has been returned to up position.
 Smoke: Type A (SW1-1 On) is a 12 VDC 6 wire smoke detector that uses an interconnect pair of wires to turn on the smoke horns. Type B (SW1-1 Off) is a 12 VDC 4 wire smoke detector that reverses polarity to turn on the smoke horns. Type B smoke detectors requires the reset button to be pressed once the smoke has been cleared to silence the smoke horns.
 Supervision: SW1-2 (OFF position) supervises the smoke detector current draw and contacts using a 1.2K end of line resistor (HM-562) across the smoke detector power and a 3.3K end of line resistor (HM-585) on the last remote pull cord switch.
 SW1-3 (OFF position) supervises the remote switch using a 3.3k end of line resistor (HM-585). EOL resistors supplied separately.

Note: Very important to set SW1-1 in the proper position. Setting it at type B with a 6 wire smoke detector will result in failure and possible damage to smoke detector.

Upon applying power, up to a 10 second delay may be applied before you see a single round of flashes of the LED on the pullcord station.

Optional Devices:
 Using the supplied HM-8P connector provides hook-up for additional wired remote call stations and a smoke detector using a normally open contact closure.
 Optional connector for direct connection into harness of the HM-527 Host Panel use part number HM-582RF.

LED Operation:
HM-W541RFx
 Alarm Transmission: 3 groups of 7 flashes each
 Alarm Restore: 1 group of 9 flashes each
 Reset: 1 group of 10 flashes each
 Check-in: 1 group of 3 flashes each
 Active Emergency Call: Steady On
 Active Smoke Call: Steady On
 Supervision Remote Trouble: Continuous Single Flash
 Supervision Smoke Trouble: Continuous Double Flash
HM-541
 Steady on when a call is placed, (Pullcord or Smoke)
HM-541L
 Steady on when switch is latched. (Pullcord or Smoke)



DIP SWITCH SW1:
 1 - Type A / B Smoke (On-Type A)(Off-Type B)
 2 - Smoke Supervision (On-No Supv)(Off-Supv On)
 3 - Remote Switch Supervision (On-No Supv)(Off-Supv On)

Specifications:
 Current Draw: 50 mA during transmit
 20 mA standby
 Power: 8 – 16 VDC input
 Interconnect cable: 2 – 4 pair 24 AWG CAT3
 Power Cable: 18 AWG recommended
 installation dependent
 HM-W541RFS 3 minute check-in
 HM-W541RFL 60 minute check-in

Heritage MEDCALL
 202 East Virginia Ave
 Tampa, Florida 33603
 813-221-1000 (ph)
 813-223-1405 (fax)
 www.heritagemedcall.com

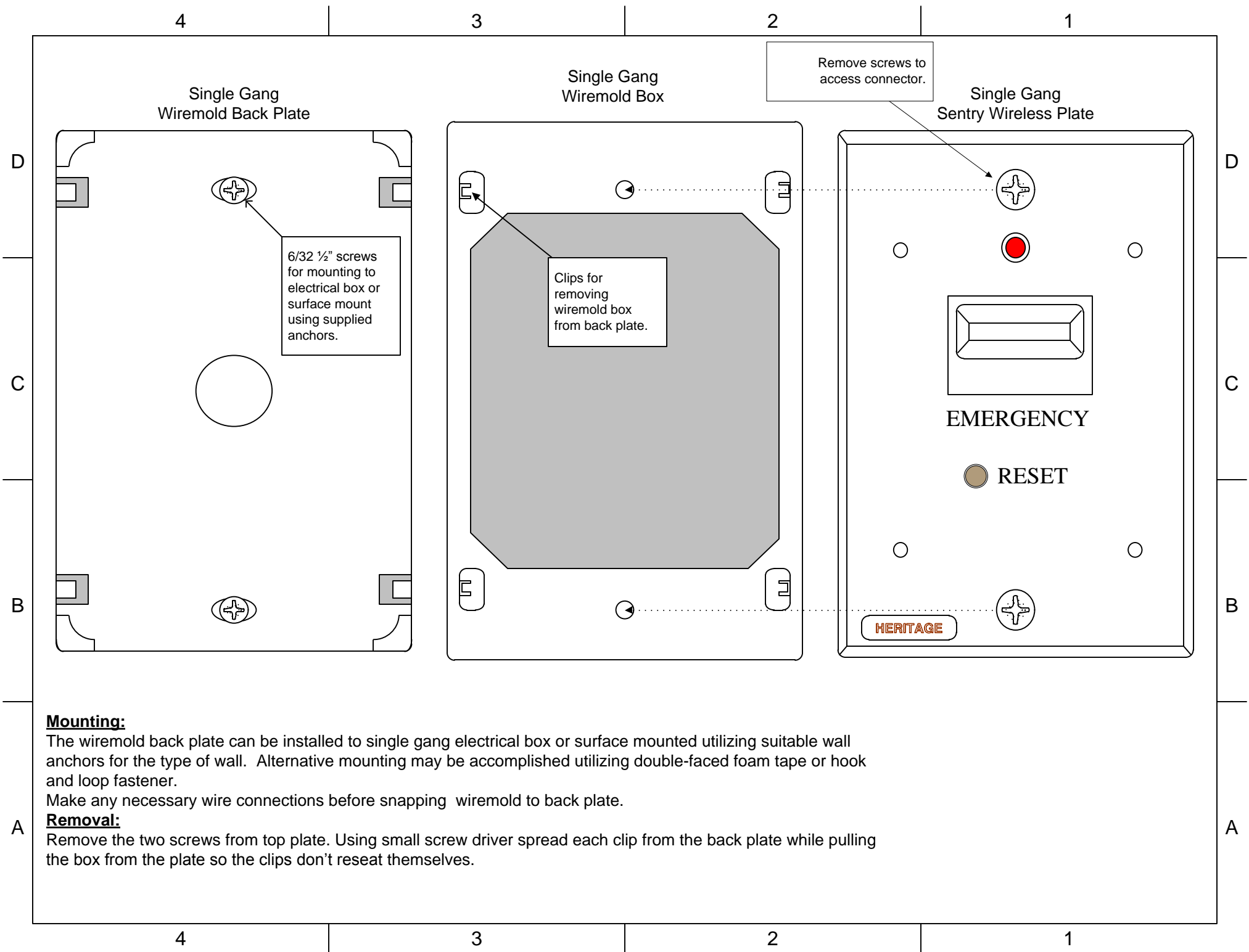
Sentry Freedom Wireless Emergency Call Systems
HM-W541RFS HM-W541RFL
 Wireless Pull Cord Transmitter
 Remote Powered – Normally Open Circuits (Supervised)

SIZE	Drawn by: JRP	File Name: hm-w54rfx-Insert.vsd	REV A
SCALE	NA	Date: 01-14-11	SHEET 1 OF 2

4
3
2
1
4
3
2
1
4
3
2
1
4

D
C
B
A
A

D
C
B
A



Mounting:

The wiremold back plate can be installed to single gang electrical box or surface mounted utilizing suitable wall anchors for the type of wall. Alternative mounting may be accomplished utilizing double-faced foam tape or hook and loop fastener.

Make any necessary wire connections before snapping wiremold to back plate.

Removal:

Remove the two screws from top plate. Using small screw driver spread each clip from the back plate while pulling the box from the plate so the clips don't reseat themselves.